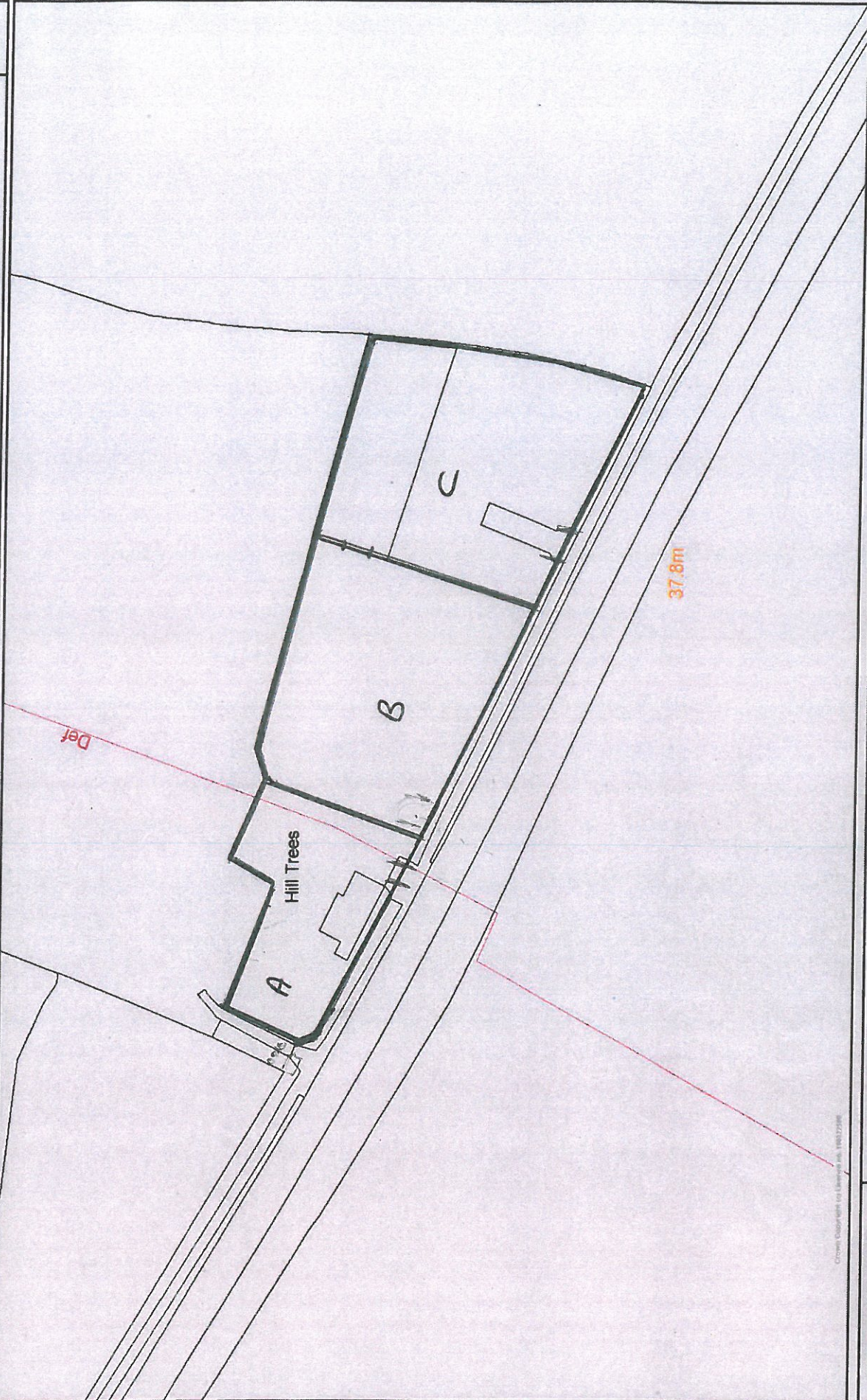


Appendix 1 - Map of site showing Areas A, B and C and aerial photographs showing the change in the site over time.

Land at Hill Trees, Babraham Rd, Stapleford, Cambridgeshire



Crown Copyright for Ordnance Survey. 100022586



Reproduced from the 2008 Ordnance Survey mapping with the permission of the controller of Her Majesty's stationary office (c) Crown Copyright. Unauthorised reproduction infringes Crown Copyright and may lead to prosecution or civil proceedings.

Scale 1/1150

Centre = 548401 E 253811 N

Date 3/12/2012

Itemised Changes - Description

1988 – Aerial photograph shows land “A” with house and outbuildings.

Land “B” and “C” shows the land to be clear and used for agricultural purposes.

1998 – Aerial photograph taken shows land “A” with the house and outbuildings.

Land “B” shows a vehicle parked within the entrance, rest of the field is clear and used for agricultural purposes.

Land “C” Is totally clear and used in connection with agriculture.

2003 – Aerial photograph shows land “A” with the house and outbuildings.

Land “B” shows the land to be clear and used for agricultural purposes.

Land “C” shows a mobile home and three vehicles

2008 – The aerial photograph shows land “A” with the house and outbuildings

Land “B” shows the land to be clear and used for agricultural purposes.

Land “C” shows several items including a disassembled Nissan hut and a lorry back used as a storage unit

10th May 2013 – The aerial photograph shows a general intensification of the land in all areas in particular;

Land “A” addition of two mobile homes and a newly constructed roadway running east to west without planning permission.

Land “B” the addition of at least 14 vehicles and a newly constructed roadway running east to west.

Land “C” the stationing of at least 18 vehicles, a disassembled Nissan hut , a lorry back used as a storage unit and a touring caravan contrary to an extant enforcement notice issued in February 2005

1988



South
Cambridgeshire
District Council

Reproduced from the 2008 Ordnance Survey mapping with the permission of the controller of Her Majesty's stationary office (c) Crown Copyright. Unauthorised reproduction infringes Crown Copyright and may lead to prosecution or civil proceedings.

Scale 1/608

Date 28/6/2013

Centre = 548416 E 253803 N

1998



Scale 1/608

Date 28/6/2013

Centre = 548416 E 253803 N

Reproduced from the 2008 Ordnance Survey mapping with the permission of the controller of Her Majesty's stationary office (c) Crown Copyright. Unauthorised reproduction infringes Crown Copyright and may lead to prosecution or civil proceedings.





South
Cambridgeshire
District Council

Reproduced from the 2008 Ordnance Survey mapping with the permission of the controller of Her Majesty's stationary office (c) Crown Copyright. Unauthorised reproduction infringes Crown Copyright and may lead to prosecution or civil proceedings.

Scale 1/608

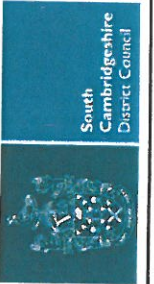
Date 28/6/2013

Centre = 548416 E 253803 N



Scale 1/602
Date 28/6/2013
Centre = 548433 E 253797 N

Reproduced from the 2008 Ordnance Survey mapping with the permission of the controller of Her Majesty's stationary office (c) Crown Copyright. Unauthorised reproduction infringes Crown Copyright and may lead to prosecution or civil proceedings.



South
Cambridgeshire
District Council



2000 N. 10th St.